

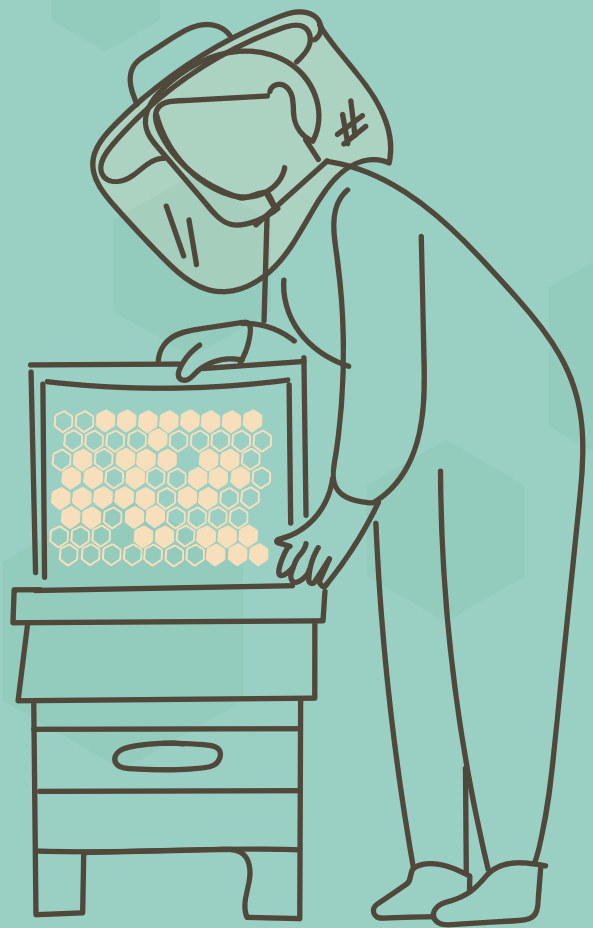
GOOD BEEKEEPING PRACTICES | Apiary Set-up and Maintenance

Find the Right Spot for Your Apiary

Keeping safe distance from houses/villages

Apiaries must be located at a safe distance from houses and villages, and wherever there are human activities that can be affected or disturbed by the presence of bees in close proximity.

It is important to avoid bee stings due to possible allergic reactions and also for social reasons to avoid disputes at a legal level. Apiaries should be clearly signposted, and their locations must respect local norms on safety distances from neighbouring installations and premises where human activities are conducted. Bee swarms can generate panic and also problems in their retrieval, and the population may object to or protest due to the risks of being exposed to bee stings in such occurrences. Special care should be taken to respect distances, especially during the active beekeeping season; if needed, water should be provided to honeybee colonies to prevent frequent visits of bees to swimming pools or fountains.



step 1

Check the area – Take a walk around your planned site. Look for nearby houses, schools, or busy areas. Pay attention to wind direction and natural features like trees or fences that can guide bee flight paths.



step 2

Measure the distance – Ensure your hives are at least 100–300 metres from homes or villages. Use a map or GPS to double-check. If the distance feels tight, consider moving further away.



step 3

Plant tall hedges or install fences around your apiary. These encourage bees to fly upwards, helping them avoid crossing paths with people nearby.



step 4

Inform and share – Let your neighbours know about your bees. Clear, friendly signs near the hives can also help visitors understand the area is buzzing with activity!



step 5

Be prepared – Always keep protective gear like gloves and suits handy. Have a first aid kit on-site and be ready to handle bee stings, just in case. A bucket of water nearby is great for quick handwashing.



Visit us
www.bthenet.eu

Contact us
info@bthenet.eu

Follow us
f @BTHENETProject

Our Consortium

