

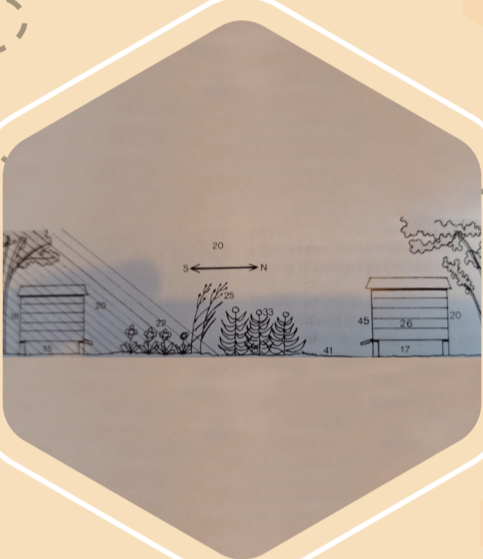
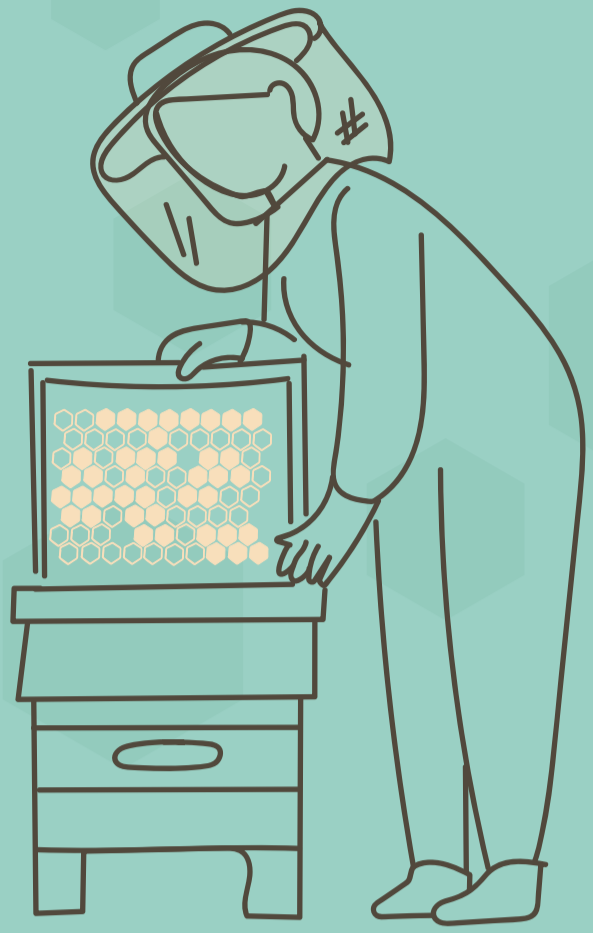
GOOD BEEKEEPING PRACTICES | Apiary Set-up and Maintenance

Find the Right Spot for Your Apiary

Avoiding areas exposed to excessive humidity and wind

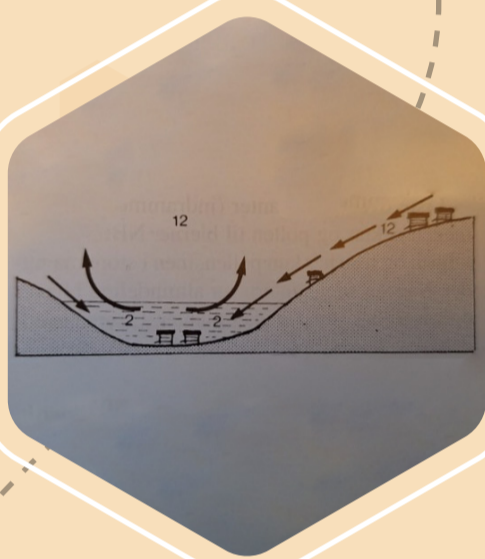
Humidity and wind can affect the development of the colonies. They can impact brood development or interfere with the thermoregulatory process, exposing the entire colony to stress and diseases.

Humidity may produce damp spots and mould inside the boxes. Wind can also cause drifting, potentially spreading diseases or leading to robbing.



step 1

A well-placed apiary is a high priority. Study the illustration to see how temperatures can vary across different areas on a June day with an outdoor temperature of 22°C.



step 2

When placing the colonies in an apiary, pay attention to wind and humidity.



step 3

For wind protection, make an open fence in the wind's direction. The fence should be partly open; otherwise, the wind will become turbulent and create more harm than help.



step 4

The aim of the fence is to slow down the wind, not to force it over the fence and down into the apiary.



step 5

Do not place the apiary in a depression. This may result in morning fog, high humidity, and wind stress. It will also increase the risk of flooding.



step 6

Rule of thumb: If you, as a human, it is probably also good for the bees.



Copyright © Avoiding areas exposed to excessive humidity and wind
All images © Flemming Vojtnas, Danish Beekeepers Association



Visit us
www.bthenet.eu

Contact us
info@bthenet.eu

Follow us
f @BTHENETProject

Our Consortium

